

Healthy Homes

Asthma Coalition of LA County

Helen Campbell
Planning and Policy Analyst
Healthy Homes Collaborative

What is "Healthy Homes" ?

- 7 principles
 - Dry
 - Clean
 - Pest Free
 - Safe
 - Contaminant Free
 - Ventilated
 - Maintained



Indoor Air Quality and Healthy Homes

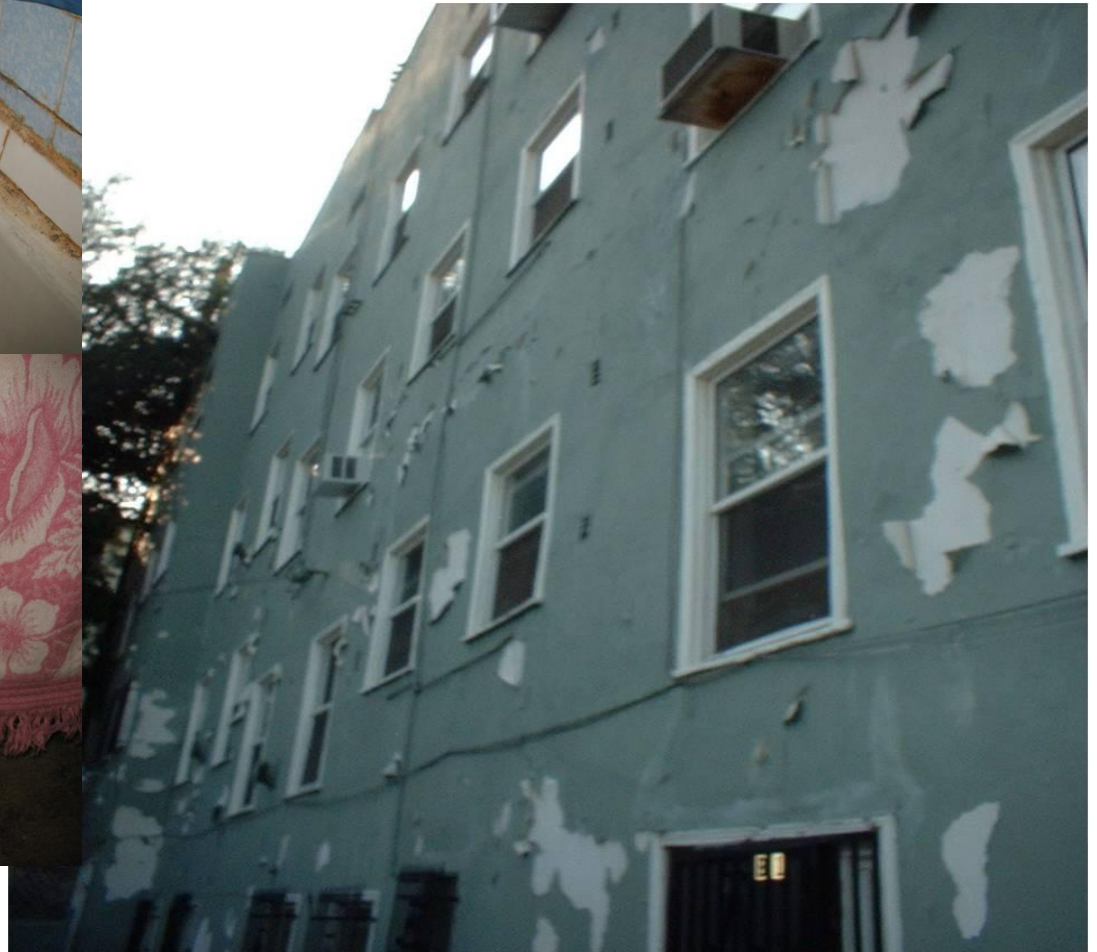
- People spend 90% of their time indoors
- Children breathe twice as much air as adults
- Dry
- Contaminant Free
- Opportunity for mechanical ventilation

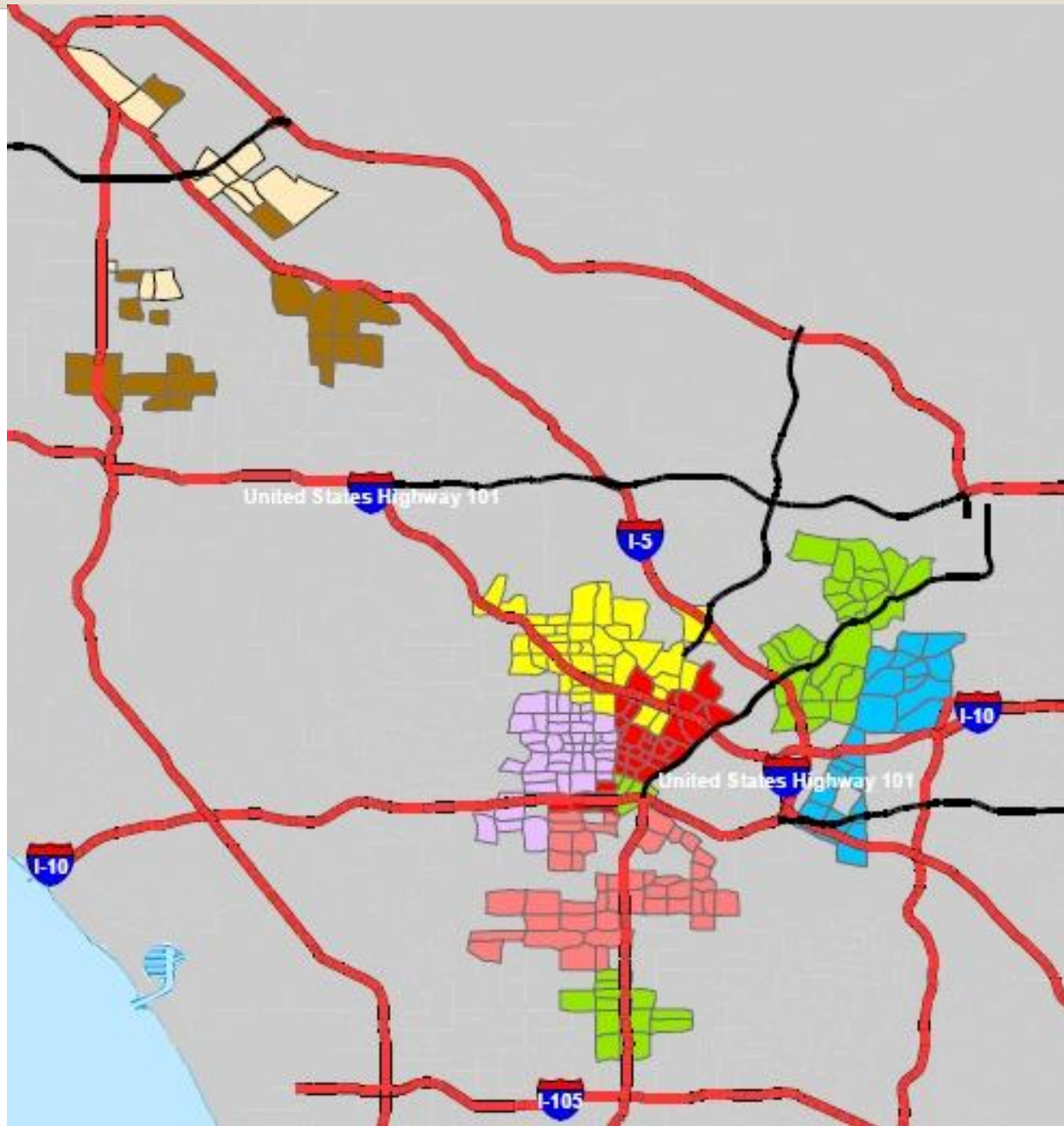


Healthy Homes Collaborative

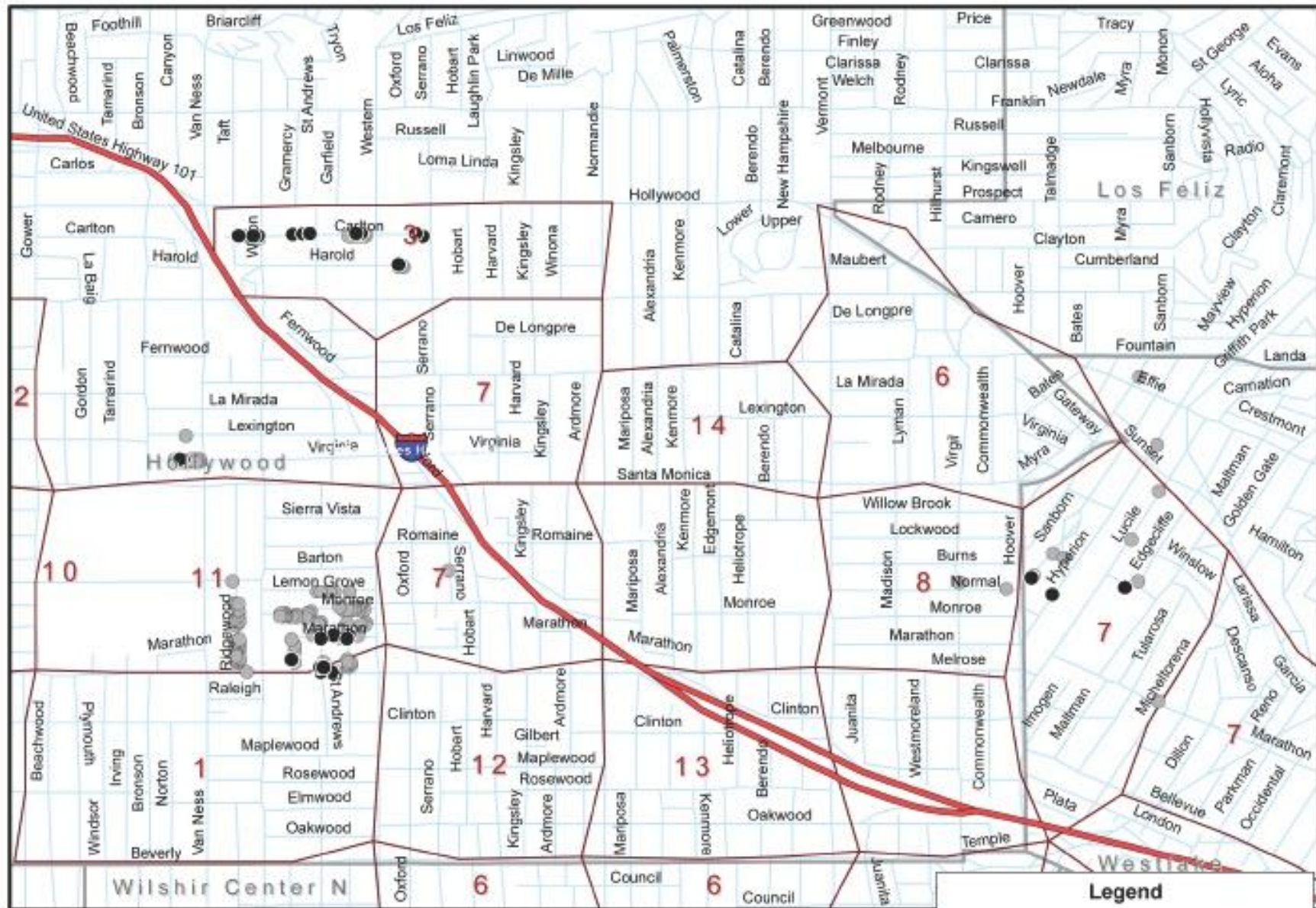
- Working Collaborative of community based organizations committed to eliminating environmental health threats in homes and communities
 - Working across geographies and types of CBOs
 - Facilitate working relationship with CBOs & government agencies
 - Capacity Building & Strategic Organizing
 - EPA RRP Certification Training @ AAGLA

Healthy Housing is a Human Right





CES SCEP Oct - Nov 2010 Healthy Homes Collaborative

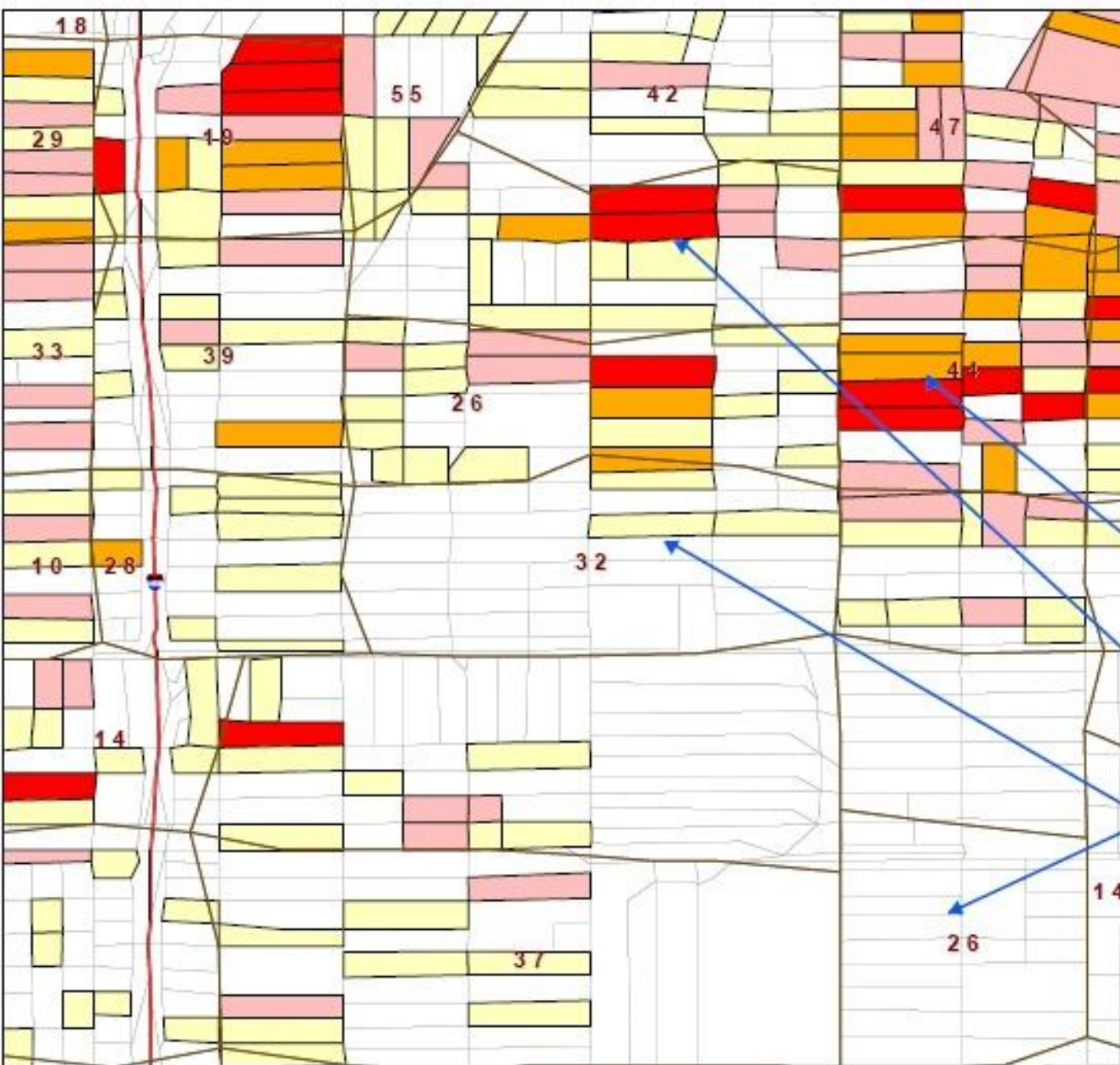


Legend

- CES SCEP Oct Nov 2010 10+units
- CES SCEP Oct Nov 2010
- ▭ EBL Cases 1997-2004/Cen Trt

Inner City Law Center Strategic Planning: Year Hsg + Kids<6 Overview with EBL Cases 1997-2004 Healthy Homes Collaborative





Legend

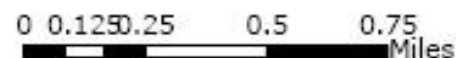
- EBL Cases 1997-2004/Cen Trt
- CD 9 Low Rated Props/Cen Blk
- 1
- 2
- 3 - 4
- 5 - 8

Red numbers indicate EBL cases per census tract (brown outline). Colors indicate number of multifamily low rated properties per census block as identified by LAHD SCEP.

Data Match = High # of EBL cases where there are many low rated properties. I.e: 44

Data Mismatch = Many low rated properties and no or few EBL cases.

Data Conundrum = High # of EBL cases and few or no low rated properties such as the 32 and 26 cases indicated here.



Statewide Healthy Homes

- CA Healthy Homes Coalition
 - Healthy Homes Indicators
 - Code Enforcement
 - Green, Affordable, and Healthy Homes
- Policy goals
 - RRP alignment
 - Statewide SCEP
 - Mold Safe Work practices

Thank you

Helen Campbell

helen@healthyhomescollabortive.org

323-221-8320

[Healthy Homes Collaborative.org](http://HealthyHomesCollaborative.org)

2601 Pasadena Ave, Ste G

LA CA 90031